



SOLUTIONS

DISPLAYS | TOUCH | EMBEDDED

TFT-Display Datasheet

LM215WF3-SLS2 | LG Display

Features

■ Active Screen Area	476.064 x 267.786 [mm]
■ Size Format	21,5" 16:9
■ Resolution	1920x1080
■ Backlight	LED
■ Brightness	250 cd/m ²
■ LED Life Time	30.000 h
■ Interface	LVDS
■ Viewing Angle	L/R 89/89 - U/D 89/89
■ Touchscreen	no
■ Power Supply	5.0 V [Typ.]
■ Module Outline	497.6 x 292.2 x 10.5 [mm]
■ Operation Temperature	-0... + 50°C
■ Storage Temperature	-20... + 60°C

Contact

HY-LINE Computer Components
Vertriebs GmbH
Inselkammerstr. 10
82008 Unterhaching
Germany

Support

Tel.: +49 89 614 503 40

Fax. +49 89 614 503 50

Send us an email

computer@hy-line.de

Product Specification

SPECIFICATION FOR APPROVAL

() Preliminary Specification
 (●) Final Specification

Title	21.5" Full HD TFT LCD
-------	-----------------------

BUYER	General
MODEL	

SUPPLIER	LG Display Co., Ltd.
*MODEL	LM215WF3
SUFFIX	SLS2

*When you obtain standard approval,
 please use the above model name without suffix

APPROVED BY	SIGNATURE DATE
/	
/	
/	

Please return 1 copy for your confirmation with
your signature and comments.

APPROVED BY	SIGNATURE DATE
SangHoon Lee / G.Manager	
REVIEWED BY	
JaeHoon Song / Manager [C]	
SuYong An / Manager [M]	
SangHo Han / Manager [O]	
HaSuk Kang / Manager [P]	
PREPARED BY	
Kyuha Oh / Engineer	
Product engineering dept. LG Display Co., Ltd	

Product Specification

Contents

No.	Item	Page
	Cover	1
	Contents	2
	Record of Revisions	3
1	General Description	4
2	Absolute Maximum Ratings	5
3	Electrical Specifications	6
3-1	Electrical Characteristics	6
3-2	Interface Connections	9
3-3	Signal Timing Specifications	14
3-4	Signal Timing Waveforms	15
3-5	Color Data Reference	16
3-6	Power Sequence	17
3-7	Power Dip Condition	18
4	Optical Specifications	19
5	Mechanical Characteristics	23
6	Reliability	26
7	International Standards	27
7-1	Safety	27
7-2	Environment	27
8	Packing	28
8-1	Designation of Lot Mark	28
8-2	Packing Form	29
9	Precautions	30
9-1	Mounting Precautions	30
9-2	Operating Precautions	30
9-3	Electrostatic Discharge Control	31
9-4	Precautions For Strong Light Exposure	31
9-5	Storage	31
9-6	Handling Precautions For Protection Film	31

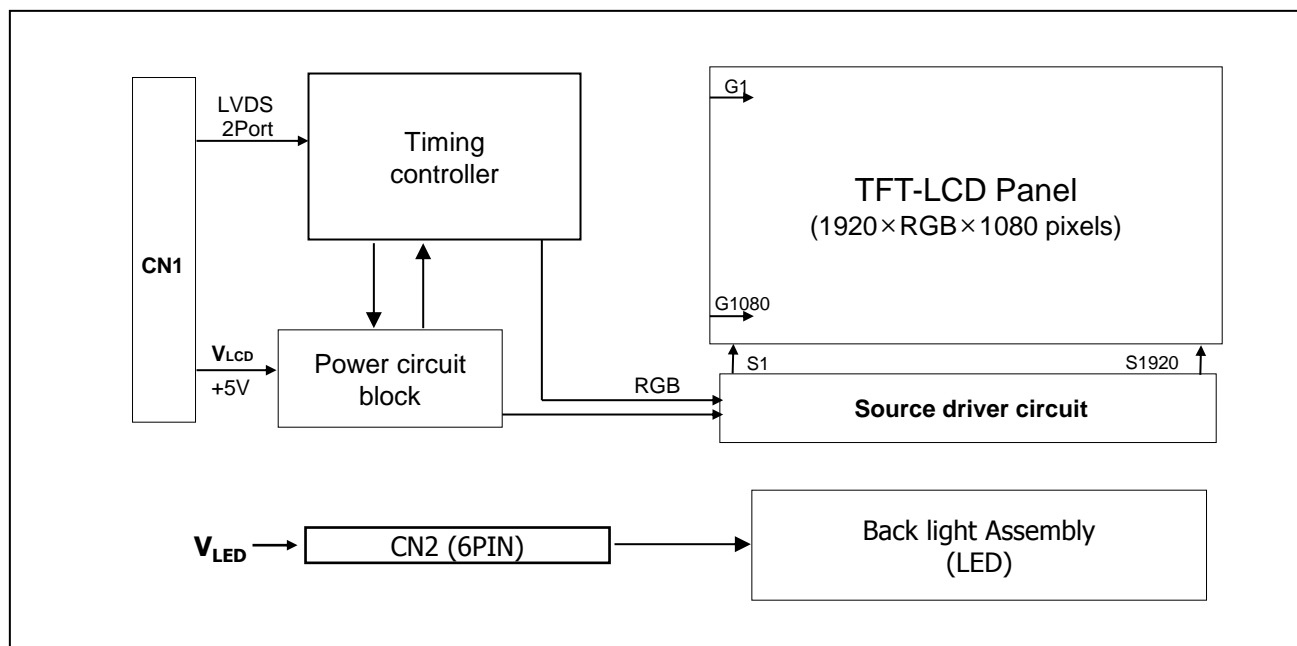
RECORD OF REVISIONS

[illegible]

Product Specification

1. General Description

LM215WF3 is a Color Active Matrix Liquid Crystal Display with a Light Emitting Diode (White LED) backlight assembly without LED driver. The matrix employs a-Si Thin Film Transistor as the active element. It is a transmissive type display operating in the normally black mode. It has a 21.5 inch diagonally measured active display area with FHD resolution (1080 vertical by 1920horizontal pixel array) Each pixel is divided into Red, Green and Blue sub-pixels or dots which are arranged in vertical stripes. Gray scale or the brightness of the sub-pixel color is determined with a 8-bit gray scale signal for each dot, thus, presenting a palette of more than 16,7M colors with A-FRC (Advanced Frame Rate Control). It has been designed to apply the 8Bit 2 port LVDS interface. It is intended to support displays where high brightness, super wide viewing angle, high color saturation, and high color are important.



[Figure 1] Block diagram

General Features

Active Screen Size	21.5 inches(54.61cm) diagonal
Outline Dimension	497.6(H) x 292.2(V) x 10.5(D) mm
Pixel Pitch	0.08265*RGB(H)mm x 0.24795(V)mm
Pixel Format	1920 horiz. By 1080 vert. Pixels RGB stripes arrangement
Color Depth	16,7M colors (6bit + A-FRC)
Luminance, White	250 cd/m ² (Center 1 Point, Typ.)
Viewing Angle(CR>10)	View Angle Free R/L 178(Typ.), U/D 178(Typ.)
Power Consumption	Total 9.8W (Typ.) 3.0W @V_LCD, 6.8W @I _s =70 mA
Weight	1685g(Typ.)
Display Operating Mode	Transmissive mode, normally black
Panel Type	Reverse Type
Surface Treatment	Anti-glare treatment of the front polarizer (Haze 25%, 3H)

Product Specification

2. Absolute Maximum Ratings

The following are maximum values which, if exceeded, may cause faulty operation or damage to the unit.

Table 2-1. Absolute Maximum Ratings

Parameter	Symbol	Values		Units	Notes
		Min	Max		
Power Supply Input Voltage	V_{LCD}	-0.3	+6.0	V_{DC}	At 25℃
Operating Temperature	T_{OP}	0	50	℃	1,2,3
Storage Temperature	T_{ST}	-20	60	℃	
Operating Ambient Humidity	H_{OP}	10	90	%RH	
Storage Humidity	H_{ST}	10	90	%RH	
LCM Surface Temperature(Operation)	$T_{surface}$	0	65	℃	1,4

Notes:

- 1) Temperature and relative humidity range are shown in the figure below.
Wet bulb temperature should be 39℃ Max, and no condensation of water.
- 2) Maximum storage humidity is up to 40℃, 70% RH only for 4 corner light leakage mura.
- 3) Storage condition is guaranteed under packing condition.
- 4) LCM surface temperature should be measured under the condition of $V_{LCD} = Typ$, $f_v = 60Hz$, $T_a = 25℃$, no humidity and typical LED string current.

- * f_v = Frame frequency
 * T_a = Ambient temperature

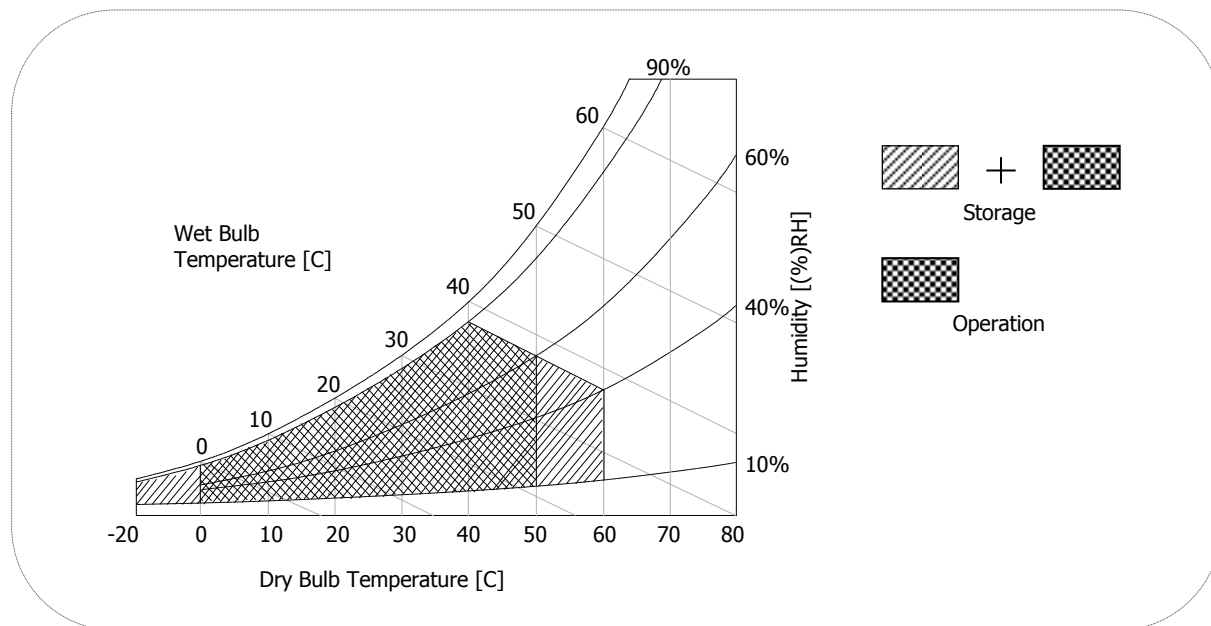


FIG.2 Temperature and relative humidity

Product Specification

3. Electrical Specifications

3-1. Electrical Characteristics

It requires two power inputs. One is employed to power the LCD electronics and to drive the TFT array and liquid crystal. The second input power for the LED/Backlight, is typically generated by a LED Driver. The LED Driver is an external unit to the LCDs.

Table 3-1. Electrical Characteristics

Parameter	Symbol	Values			Unit	Notes
		Min	Typ	Max		
MODULE :						
Power Supply Input Voltage	VLCD	4.5	5	5.5	Vdc	5
Permissive Power Input Ripple	VdRF			400	mVp-p	1
Power Supply Input Current	ILCD_Mosaic	-	600	740	mA	2
	ILCD_White	-	750	940	mA	3
Power Consumption	Pc_Mosaic	-	3.0	3.75	Watt	2
	Pc_White	-	3.8	4.7	Watt	3
Rush current	IRUSH	-	-	3.0	A	4

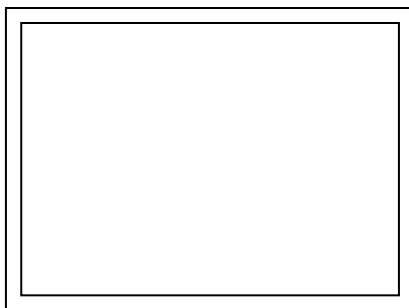
Notes:

- 1) Permissive power ripple should be measured under the condition of V_{LCD} = Typ, 25±2℃, f_V = Max.
Refer to page 7 for the pattern and more information.
- 2) The specified current and power consumption can be measured under the V_{LCD} = Typ, 25±2℃, f_V = 60Hz and the pattern should be changed according to the typical or maximum power condition.
The max. current can be measured only with the maximum power pattern and the max. current is based on the peak value using oscilloscope, not the RMS value. See the page 7 for details.
(Measurement condition : Sample Mode, Time division 40ms, Sampling Rate 2.5MS/s)
- 3) Maximum condition of inrush current:
The duration of rush current is about 5ms and rising time of power input is 500us ±20%.(Min).
- 4) V_{LCD} level must be measured between two points on PCB of LCM V_{LCD}(test point) ~ LCM Ground.
(Test condition: Maximum power pattern, 25℃, f_V = 60Hz)

* f_V = Frame frequency

Product Specification

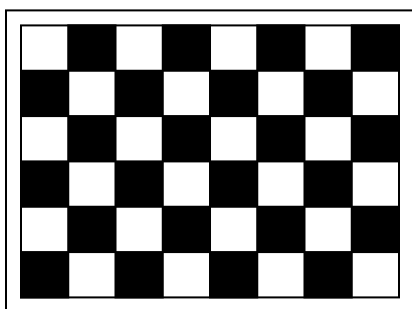
- **Permissive Power input ripple** ($V_{LCD} = 5.0V$, $25^{\circ}C$, f_v (frame frequency)=MAX condition)



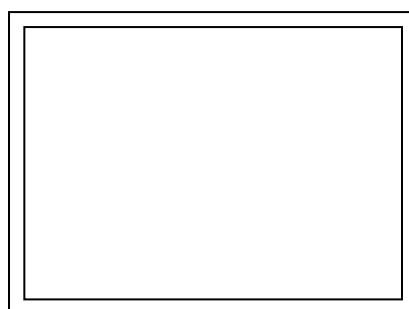
White pattern

For the exact ripple measurement, the condition of Max 20MHz is recommended in the bandwidth configuration of oscilloscope.

- **Power consumption** ($V_{LCD} = 5V$, $25^{\circ}C$, f_v (frame frequency)=60Hz condition)



Typical power Pattern



Maximum power Pattern

FIG.3-1 Mosaic Pattern & White Pattern For Power Consumption Measurement

Product Specification

Table 2-2. LED Bar ELECTRICAL CHARACTERISTICS

Parameter	Symbol	Values			Unit	Notes
		Min.	Typ.	Max.		
LED String Current	Is	-	70	75	mA	1, 2
LED String Voltage	Vs	45.2	48.6	52.0	V	1, 3
Power Consumption	PBar	-	6.8	7.3	Watt	2, 5
LED Life Time	LED_LT	30,000	-	-	Hrs	4

Note : The LED Bar consists of 34 LED packages, 2 strings (parallel) x 17 packages (serial)

Notes :

- 1) The specified values are for single LED bar.
- 2) The specified current is defined as the input current for single LED string with 100% duty cycle.
- 3) The specified voltage is the input LED string voltage at typical current 100% duty cycle.
- 4) The LED life time is defined as the when brightness of LED itself reach to the 50% of initial value under the conditions at $T_a = 25 \pm 2^\circ\text{C}$ and typical LED string current.
- 5) The power consumption shown above does not include the loss of external LED driver.
 The typical power consumption is calculated as $P_{\text{bar}} = V_s(\text{Typ.}) \times I_s(\text{Typ.}) \times \text{No. of strings}$.
 The maximum power consumption is calculated as $P_{\text{bar}} = V_s(\text{Max.}) \times I_s(\text{Typ.}) \times \text{No. of strings}$.

Product Specification

3-2. Interface Connections

3-2-1. LCD Module

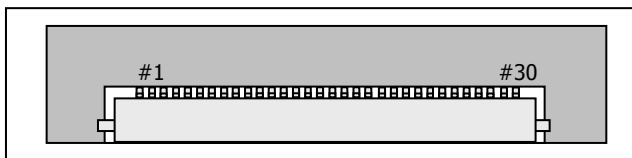
- LCD Connector(CN1) : IS100-L300-C23 (UJU)
- Mating Connector : FI-X30C2L (Manufactured by JAE) or Equivalent

Table 3-3. Module Connector(CN1) Pin Configuration

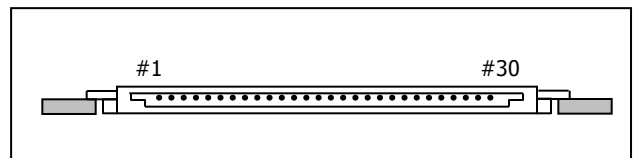
No	Symbol	Description	No	Symbol	Symbol
1	FR0M	Minus signal of odd channel 0 (LVDS)	16	SR1P	Plus signal of even channel 1 (LVDS)
2	FR0P	Plus signal of odd channel 0 (LVDS)	17	GND	Ground
3	FR1M	Minus signal of odd channel 1 (LVDS)	18	SR2M	Minus signal of even channel 2 (LVDS)
4	FR1P	Plus signal of odd channel 1 (LVDS)	19	SR2P	Plus signal of even channel 2 (LVDS)
5	FR2M	Minus signal of odd channel 2 (LVDS)	20	SCLKINM	Minus signal of even clock channel (LVDS)
6	FR2P	Plus signal of odd channel 2 (LVDS)	21	SCLKINP	Plus signal of even clock channel (LVDS)
7	GND	Ground	22	SR3M	Minus signal of even channel 3 (LVDS)
8	FCLKINM	Minus signal of odd clock channel (LVDS)	23	SR3P	Plus signal of even channel 3 (LVDS)
9	FCLKINP	Plus signal of odd clock channel (LVDS)	24	GND	Ground
10	FR3M	Minus signal of odd channel 3 (LVDS)	25	NC	No Connection (I2C Serial interface for LCM)
11	FR3P	Plus signal of odd channel 3 (LVDS)	26	NC	No Connection.(I2C Serial interface for LCM)
12	SR0M	Minus signal of even channel 0 (LVDS)	27	ITLC	Interlace mode selection
13	SR0P	Plus signal of even channel 0 (LVDS)	28	V _{LCD}	Power Supply +5.0V
14	GND	Ground	29	V _{LCD}	Power Supply +5.0V
15	SR1M	Minus signal of even channel 1 (LVDS)	30	V _{LCD}	Power Supply +5.0V

Notes:

- 1) All GND(ground) pins should be connected together to the LCD module's metal frame.
- 2) All V_{LCD}(power input) pins should be connected together.
- 3) All input level of LVDS signals are based on the EIA 644 standard.
- 4) ITLC is used for image sticking reduction in interlace mode.
 (L: Normal mode, H: Interlace image sticking reduction mode)
 This pin should be connected to GND in normal mode.
 (Low level Input Voltage : GND ~ 0.4V, High level Input Voltage : 1.6 ~ 3.6V)



IS100-L300-C23



Rear view of LCM

Product Specification

Required signal assignment for flat link(TI:SN75LVDS83) transmitter

No	Pin Name	Required Signal	No	Pin Name	Required Signal
1	VCC	Power supply for TTL Input	29	GND	Ground pin for TTL
2	D5	TTL Input(R7)	30	D26	TTL Input(DE)
3	D6	TTL Input(R5)	31	Tx CLKIN	TTL Level clock Input
4	D7	TTL Input(G0)	32	PWR DWN	Power down Input
5	GND	Ground pin for TTL	33	PLL GND	Ground pin for PLL
6	D8	TTL Input(G1)	34	PLL VCC	Power supply for PLL
7	D9	TTL Input(G2)	35	PLL GND	Ground pin for PLL
8	D10	TTL Input(G6)	36	LVDS GND	Ground pin for LVDS
9	VCC	Power supply for TTL Input	37	Tx OUT3 +	Positive LVDS differential data output 3
10	D11	TTL Input(G7)	38	Tx OUT3 –	Negative LVDS differential data output 3
11	D12	TTL Input(G3)	39	Tx CLKOUT +	Positive LVDS differential clock output
12	D13	TTL Input(G4)	40	Tx CLKOUT –	Negative LVDS differential clock output
13	GND	Ground pin for TTL	41	Tx OUT2 +	Positive LVDS differential data output 2
14	D14	TTL Input(G5)	42	Tx OUT2 –	Negative LVDS differential data output 2
15	D15	TTL Input(B0)	43	LVDS GND	Ground pin for LVDS
16	D16	TTL Input(B6)	44	LVDS VCC	Power supply for LVDS
17	VCC	Power supply for TTL Input	45	Tx OUT1 +	Positive LVDS differential data output 1
18	D17	TTL Input(B7)	46	Tx OUT1 –	Negative LVDS differential data output 1
19	D18	TTL Input(B1)	47	Tx OUT0 +	Positive LVDS differential data output 0
20	D19	TTL Input(B2)	48	Tx OUT0 –	Negative LVDS differential data output 0
21	GND	Ground pin for TTL Input	49	LVDS GND	Ground pin for LVDS
22	D20	TTL Input(B3)	50	D27	TTL Input(R6)
23	D21	TTL Input(B4)	51	D0	TTL Input(R0)
24	D22	TTL Input(B5)	52	D1	TTL Input(R1)
25	D23	TTL Input(RSVD)	53	GND	Ground pin for TTL
26	VCC	Power supply for TTL Input	54	D2	TTL Input(R2)
27	D24	TTL Input(HSYNC)	55	D3	TTL Input(R3)
28	D25	TTL Input(VSYNC)	56	D4	TTL Input(R4)

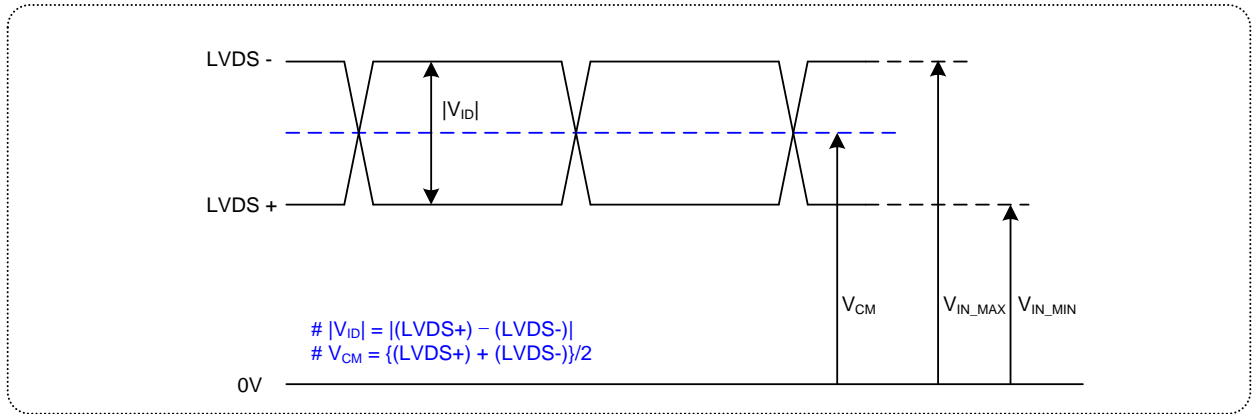
Notes:

- 1) Refer to LVDS transmitter data sheet for detail description.
- 2) 7 means MSB and 0 means LSB at R,G,B pixel data.

Product Specification

LVDS Input characteristics

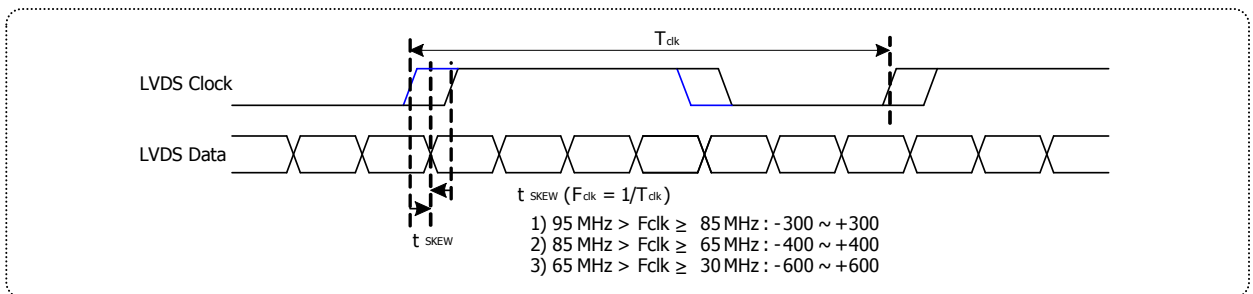
1. DC Specification



Description	Symbol	Min	Max	Unit	Notes
LVDS Differential Voltage	$ V_{ID} $	200	600	mV	-
LVDS Common mode Voltage	V_{CM}	1.0	1.5	V	-
LVDS Input Voltage Range	V_{IN}	0.7	1.8	V	-
Change in common mode Voltage	ΔV_{CM}	-	250	mV	-

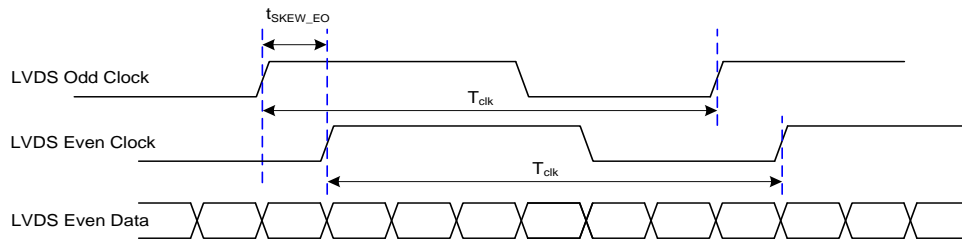
Notes : Dose not have any Noise & Peaking in LVDS Signal

2. AC Specification



Description	Symbol	Min	Max	Unit	Notes
LVDS Clock to Data Skew Margin	t _{skew}	- 300	+ 300	ps	95MHz > F _{clk} ≥ 85MHz
	t _{skew}	- 400	+ 400	ps	85MHz > F _{clk} ≥ 65MHz
	t _{skew}	- 600	+ 600	ps	65MHz > F _{clk} ≥ 30MHz
LVDS Clock to Clock Skew Margin (Even to Odd)	t _{skew_EO}	- 1/7	+ 1/7	T _{clk}	-

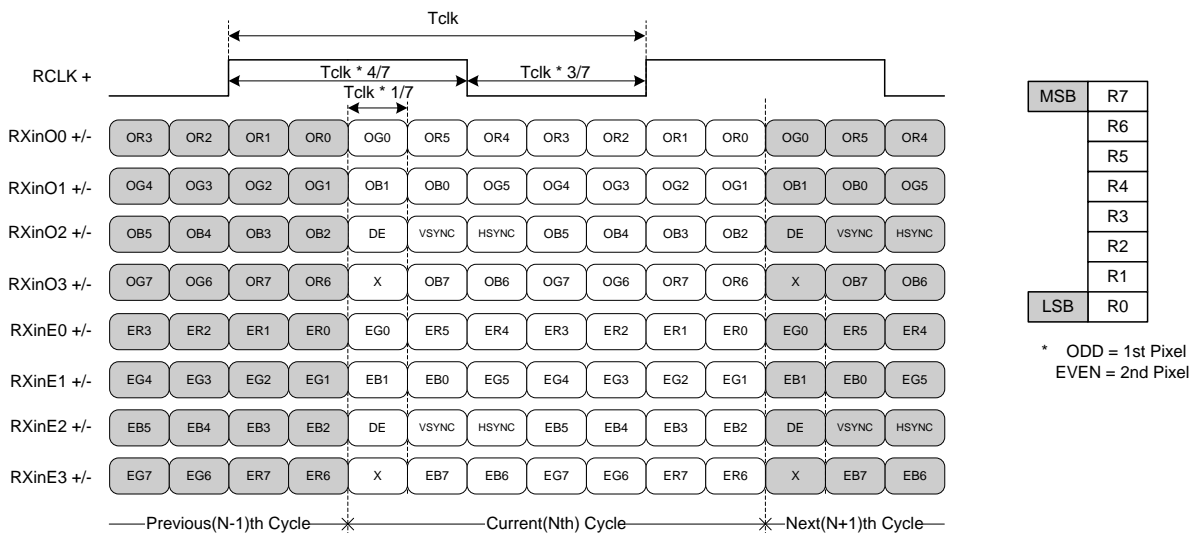
Product Specification



< Clock skew margin between channel >

3. Data Format

1) LVDS 2 Port



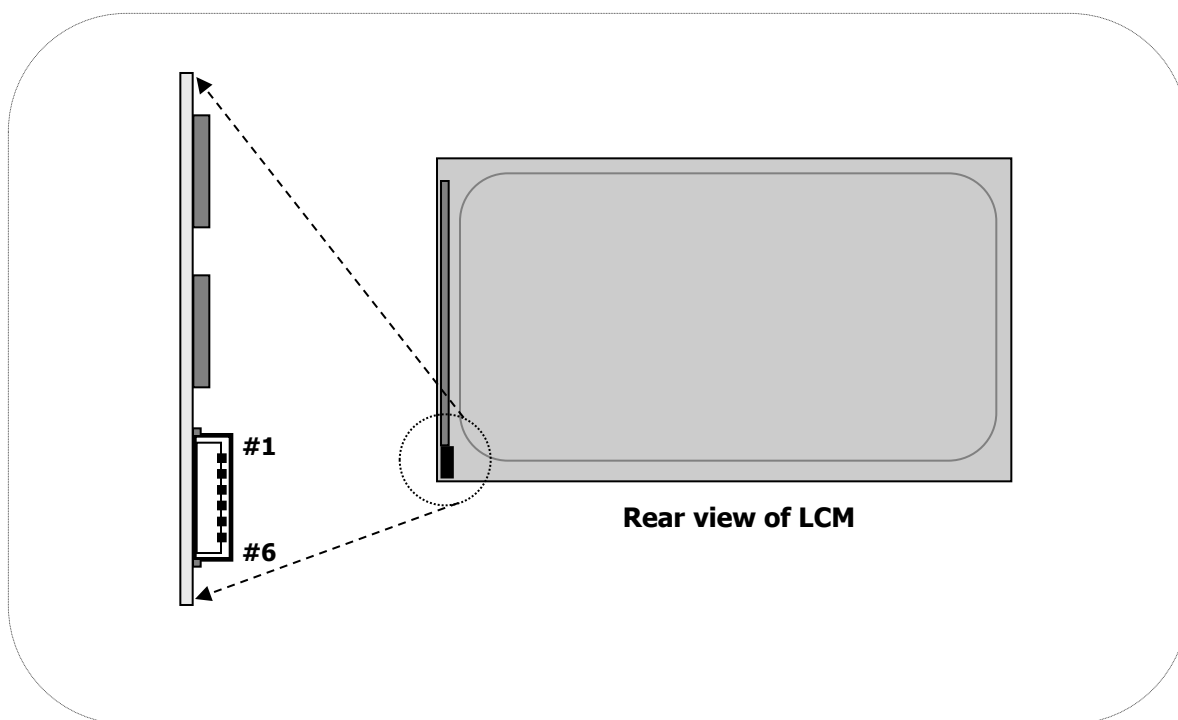
< LVDS Data Format >

Product Specification

3-2-3. Backlight Connector Pin Configuration

The LED interface connector is a model 10035WR-H06D_manufactured by YEONHO
 The mating connector is a SHJP-06V-S(HF) or SHJP-06V-A-K(HF) and Equivalent.
 The pin configuration for the connector is shown in the table below.

Pin	Symbol	Description	Notes
1	FB1	Channel1 Current Feedback	
2	NC	No Connection	
3	VLED	LED Power Supply	
4	VLED	LED Power Supply	
5	NC	No Connection	
6	FB2	Channel2 Current Feedback	



[Figure 5] Backlight connector view

Product Specification

3-3. Signal Timing Specifications

This is signal timing required at the input of the TMDS transmitter. All of the interface signal timing should be satisfied with the following specifications for it's proper operation.

Table 3-5. Timing Table

ITEM	Symbol		Min.	Typ.	Max.	Unit	Note
DCLK	Period	tCLK	10.53	13.89	16.7	ns	Pixel frequency Typ. 144Mhz
	Frequency	-	60	72	95	MHz	
Hsync	Period	tHP	1024	1088	1120	tCLK	1,3,4
	Horizontal Valid	tHV	960	960	960	tCLK	
	Horizontal Blank	tHB	64	128	160		
	Frequency	fH	64	66	83	KHz	
	Width	tWH	16	32	48	tCLK	
	Horizontal Back Porch	tHBP	32	48	64		
	Horizontal Front Porch	tHFP	16	48	48		
Vsync	Period	tVP	1090	1100	1965	tHP	2,4
	Vertical Valid	tVV	1080	1080	1080	tHP	
	Vertical Blank	tVB	10	20	885	tHP	
	Frequency	fV	47	60	77	Hz	
	Width	tWV	2	4	16	tHP	
	Vertical Back Porch	tVBP	5	8	32		
	Vertical Front Porch	tVFP	3	8	837		

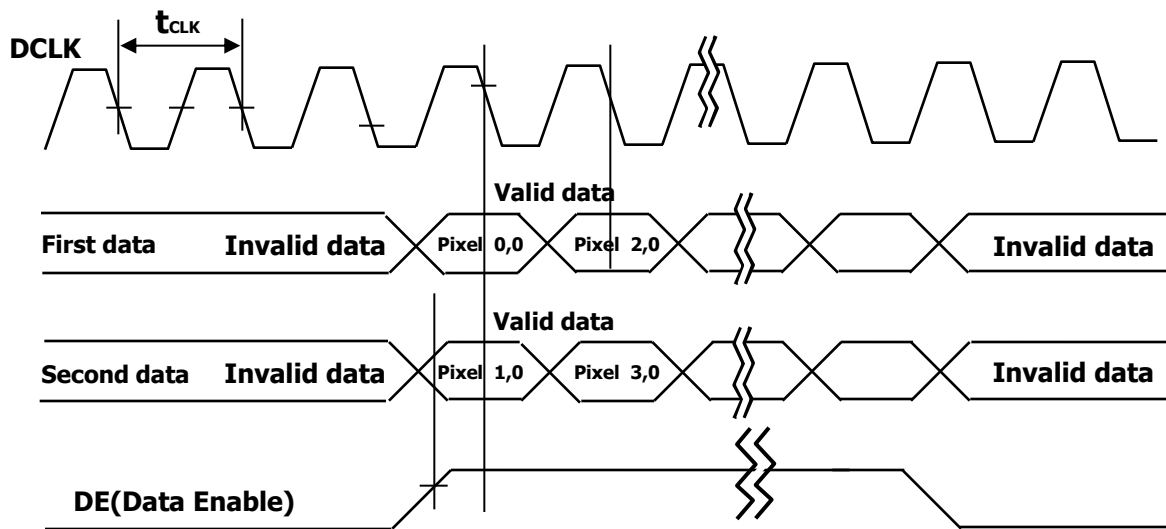
Notes :

- 1.The value of Hsync period, Hsync width and Hsync valid should be even number times of tCLK.
If the value is odd number times of tCLK, it can make asynchronous signal timing and cause abnormal display.
- 2.The performance of the electro-optical characteristics may be influenced by variance of the vertical refresh rates.
- 3.The value of Hsync Period, Hsync Width, and Horizontal Back Porch should be divided by 4 without a remainder.
4. The polarity of Hsync, Vsync is not restricted.

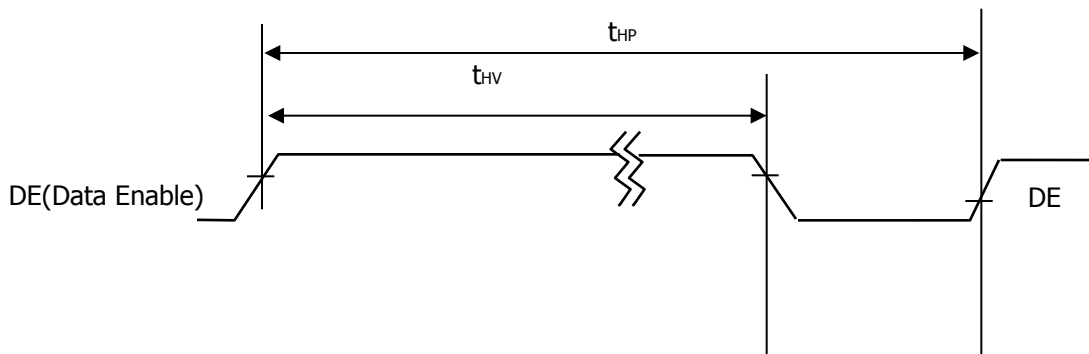
Product Specification

3-4. Signal Timing Waveforms

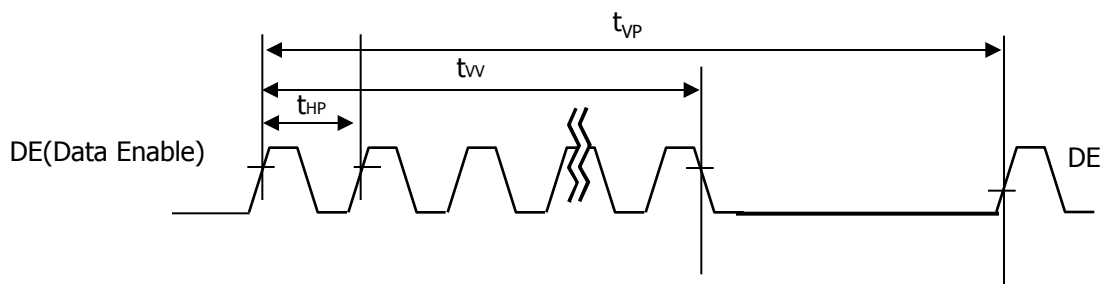
1. DCLK, DE, DATA waveforms



2. Horizontal waveform



3. Vertical waveform



Product Specification

3-5. Color Input Data Reference

The Brightness of each primary color(red,green,blue) is based on the 8-bit gray scale data input for the color; the higher the binary input, the brighter the color. The table below provides a reference for color versus data input.

Table 3-6. Color Data Reference

Color		Input Color Data																									
		RED								GREEN								BLUE									
		MSB				LSB				MSB				LSB				MSB				LSB					
		R7	R6	R5	R4	R3	R2	R1	R0	G7	G6	G5	G4	G3	G2	G1	G0	B7	B6	B5	B4	B3	B2	B1	B0		
Basic Color	Black	0	0	0	0	0	0	0	0	0	0	0	0	0	0	0	0	0	0	0	0	0	0	0	0		
	Red (255)	1	1	1	1	1	1	1	1	0	0	0	0	0	0	0	0	0	0	0	0	0	0	0	0		
	Green (255)	0	0	0	0	0	0	0	0	1	1	1	1	1	1	1	1	0	0	0	0	0	0	0	0		
	Blue (255)	0	0	0	0	0	0	0	0	0	0	0	0	0	0	0	0	1	1	1	1	1	1	1	1		
	Cyan	0	0	0	0	0	0	0	0	1	1	1	1	1	1	1	1	1	1	1	1	1	1	1	1		
	Magenta	1	1	1	1	1	1	1	1	0	0	0	0	0	0	0	0	1	1	1	1	1	1	1	1		
	Yellow	1	1	1	1	1	1	1	1	1	1	1	1	1	1	1	1	0	0	0	0	0	0	0	0		
	White	1	1	1	1	1	1	1	1	1	1	1	1	1	1	1	1	1	1	1	1	1	1	1	1		
RED	RED (000) Dark	0	0	0	0	0	0	0	0	0	0	0	0	0	0	0	0	0	0	0	0	0	0	0	0		
	RED (001)	0	0	0	0	0	0	0	1	0	0	0	0	0	0	0	0	0	0	0	0	0	0	0	0		
									
	RED (254)	1	1	1	1	1	1	1	1	0	0	0	0	0	0	0	0	0	0	0	0	0	0	0	0		
	RED (255)	1	1	1	1	1	1	1	1	1	0	0	0	0	0	0	0	0	0	0	0	0	0	0	0		
GREEN	GREEN (000) Dark	0	0	0	0	0	0	0	0	0	0	0	0	0	0	0	0	0	0	0	0	0	0	0	0		
	GREEN (001)	0	0	0	0	0	0	0	0	0	0	0	0	0	0	0	1	0	0	0	0	0	0	0	0		
									
	GREEN (254)	0	0	0	0	0	0	0	0	1	1	1	1	1	1	1	0	0	0	0	0	0	0	0	0		
	GREEN (255)	0	0	0	0	0	0	0	0	1	1	1	1	1	1	1	1	0	0	0	0	0	0	0	0		
BLUE	BLUE (000) Dark	0	0	0	0	0	0	0	0	0	0	0	0	0	0	0	0	0	0	0	0	0	0	0	0		
	BLUE (001)	0	0	0	0	0	0	0	0	0	0	0	0	0	0	0	0	0	0	0	0	0	0	1	1		
									
	BLUE (254)	0	0	0	0	0	0	0	0	0	0	0	0	0	0	0	0	1	1	1	1	1	1	1	0		
	BLUE (255)	0	0	0	0	0	0	0	0	0	0	0	0	0	0	0	0	1	1	1	1	1	1	1	1		

Product Specification

3-6. Power Sequence

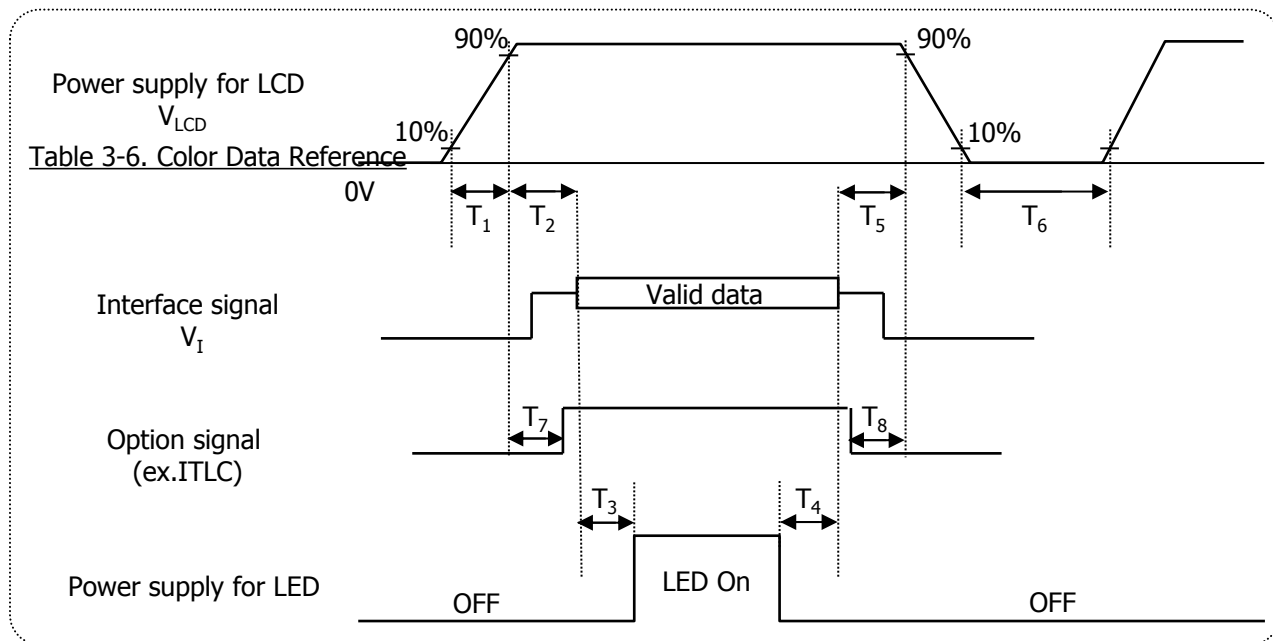


Table 3-7. Power Sequence

Parameter	Values			Units
	Min.	Typ.	Max.	
T ₁	0.5	-	10	ms
T ₂	0.01	-	50	ms
T ₃	500	-	-	ms
T ₄	200	-	-	ms
T ₅	0.01	-	50	ms
T ₆	1000	-	-	ms
T ₇	0.5	-	T2	ms
T ₈	0	-	-	ms

Notes:

- Power sequence should be kept all the time including below cases for normal operation.
 - AC/DC Power On/Off
 - Mode change (resolution, frequency, timing, sleep mode, color depth change, etc.)
 The violation of power sequence can cause a significant trouble in display and reliability.
- Please avoid floating state of interface signal during signal invalid period.
- When the interface signal is invalid, be sure to pull down the V_{LCD} (0V)
- Please turn off the power supply for LED when the level of V_{LCD} changes to prevent noise issue.
- When measuring valid data starting point, it can be measured that LVDS signal starts swing.

Product Specification

3-7. V_{LCD} Power Dip Condition

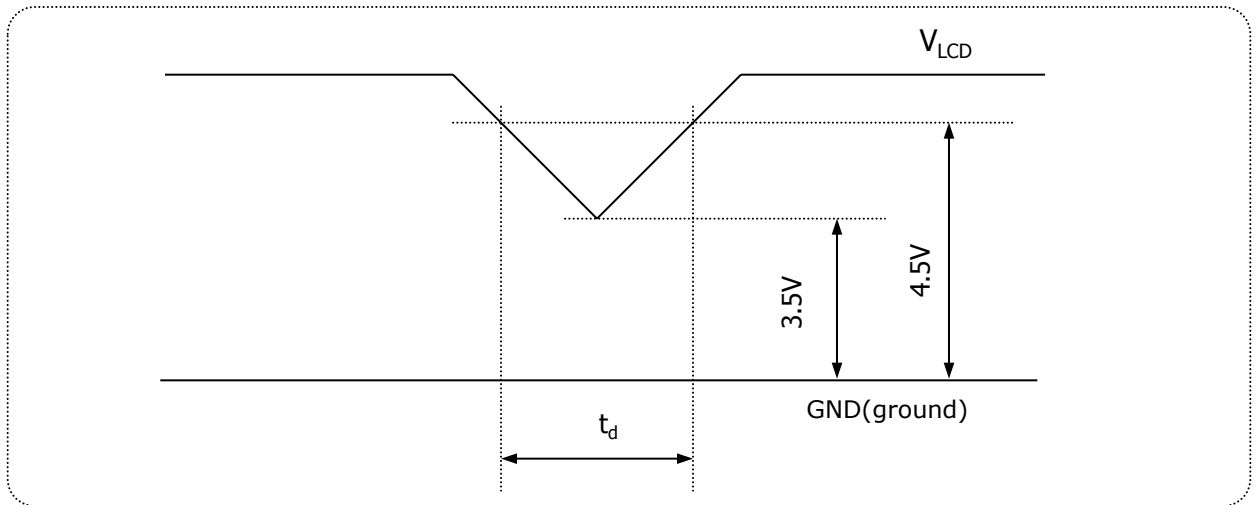


FIG.3-3 Power Dip Condition

1) Dip condition

$$3.5V \leq V_{LCD} < 4.5V, \quad t_d \leq 20ms$$

Product Specification

4. Optical Specifications

Optical characteristics are determined after the unit has been 'ON' for approximately 30 minutes in a dark environment at $25 \pm 2^\circ\text{C}$. The values specified are at an approximate distance 50cm from the LCD surface at a viewing angle of Φ and θ equal to 0° and aperture 1 degree.

FIG. 1 presents additional information concerning the measurement equipment and method.

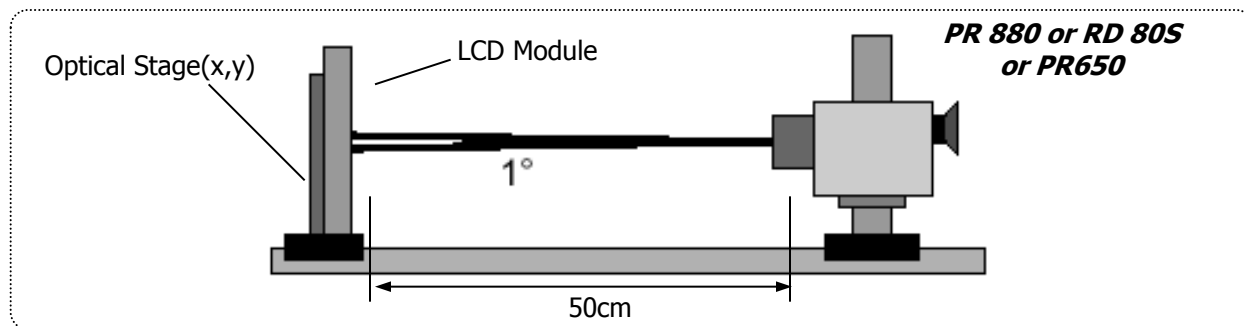


FIG.7 Optical Characteristic Measurement Equipment and Method

Table 4-1. Optical Characteristics

($T_a = 25^\circ\text{C}$, $V_{\text{LCD}} = \text{Typ}$, $f_v = 60\text{ Hz}$, $\text{DCLK} = \text{Typ}$, $I_s = \text{Typ}$)

Parameter		Symbol	Values			Units	Notes
			Min.	Typ.	Max.		
Contrast Ratio		CR	700	1000	-		1
Surface Luminance, white		L _{WH}	200	250	-	cd/m²	2
Luminance Variation		δ _{WHITE}	75	-	-	%	3
Response Time	Gray to Gray	T _{GTG_AVR}	-	14	25	ms	4
Color Coordinates [CIE 1931] <i>(By PR650)</i>	Red	R _x	Typ -0.03	0.660	Typ +0.03		
		R _y		0.332			
	Green	G _x		0.330			
		G _y		0.612			
	Blue	B _x		0.150			
		B _y		0.060			
	White	W _x		0.313			
		W _y		0.329			
Color Temperature		-	-	6500	-	K	
Viewing Angle (CR>10, General)	Horizontal	θ _H	170	178	-	Degree	5
	Vertical	θ _V	170	178	-		
Gray Scale		-		2.2			6

Product Specification

Notes:

- 1) **Contrast Ratio(CR)** is defined mathematically as: **(By PR880)**
It is measured at center point(1)

$$\text{Contrast ratio} = \frac{\text{Surface luminance with all white pixels}}{\text{Surface luminance with all black pixels}}$$

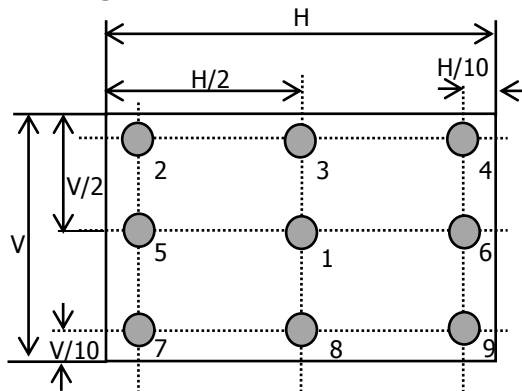
- 2) **Surface Luminance(L_{WH})** is the luminance value at center 1 point(1) across the LCD surface 50cm from the surface with all pixels displaying white. For more information see FIG.4-1. **(By PR880)**

- 3) The **Variation in Surface Luminance** , δ_{WHITE} is defined as: **(By PR880)**

$$\delta_{\text{WHITE}} = \frac{\text{Minimum}(LP_1, LP_2, \dots, LP_9)}{\text{Maximum}(LP_1, LP_2, \dots, LP_9)} \times 100(\%)$$

Where L1 to L9 are the luminance with all pixels displaying white at 9 locations.
For more information see FIG.4-2.

<Measuring Point For Luminance Variation>



@ H,V: Active Area

<Measuring Point For Surface Luminance>

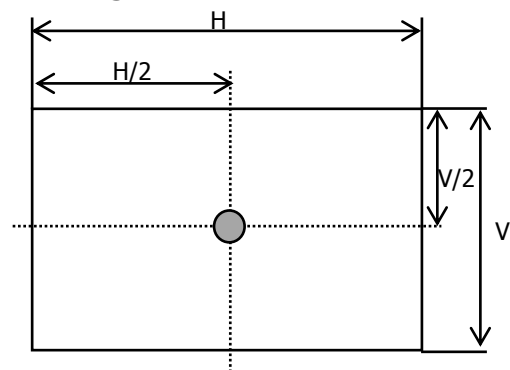


FIG.4-2 Measure Point for Luminance

Product Specification

Notes:

- 4) The **Gray To Gray Response Time** is defined as the following figure and shall be measured by switching the input signal for "Gray To Gray ". (**By RD80S**)
- Gray step: 5 Step
 - T_{GTG_AVR} is the total average time at rising time and falling time for "Gray To Gray ".
 - For the GTG measurement, the sampling rate of oscilloscope is 500k/s.

Table 4-2. GTG Gray

Gray to Gray		Rising Time				
		G255	G191	G127	G63	G0
Falling Time	G255					
	G191					
	G127					
	G63					
	G0					

Response Time is defined as the following figure and shall be measured by switching the input signal for "Gray(N)" and "Gray(M)".

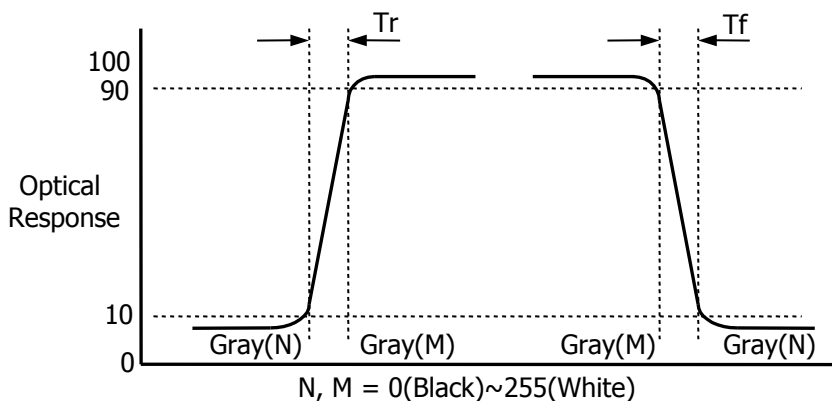


FIG.4-3 Response Time

Product Specification

Notes:

- 5) **Viewing Angle** is the angle at which the contrast ratio is greater than 10. The angles are determined for the horizontal or x axis and the vertical or y axis with respect to the z axis which is normal to the LCD surface. For more information see FIG.4-4. **(By PR880)**

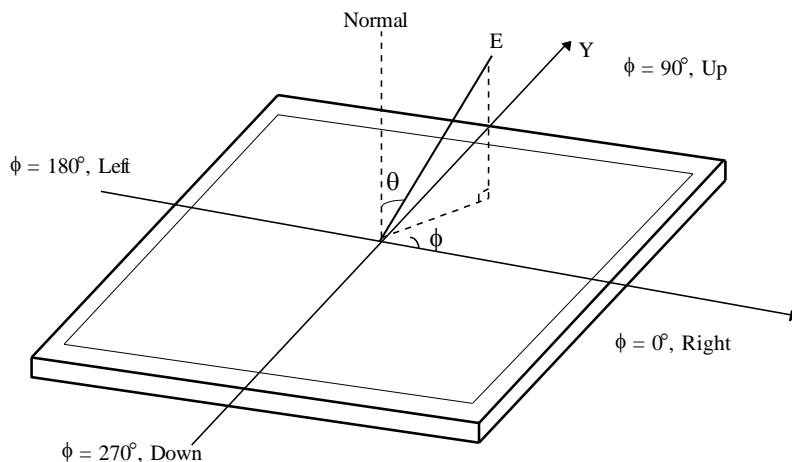


FIG.4-4 Viewing Angle

- 6) **Gamma Value** is approximately 2.2. For more information see below table.

Table 4-3. Gray Scale Specification

Gray Level	Relative Luminance [%](Typ)
0	0.1
15	0.3
31	1.08
47	2.5
63	4.72
79	7.7
95	11.49
111	16.2
127	21.66
143	28.2
159	35.45
175	43.8
191	53.0
207	63.3
223	74.48
239	86.8
255	100

Product Specification

5. Mechanical Characteristics

The contents provide general mechanical characteristics. In addition the figures in the next page are detailed mechanical drawing of the LCD.

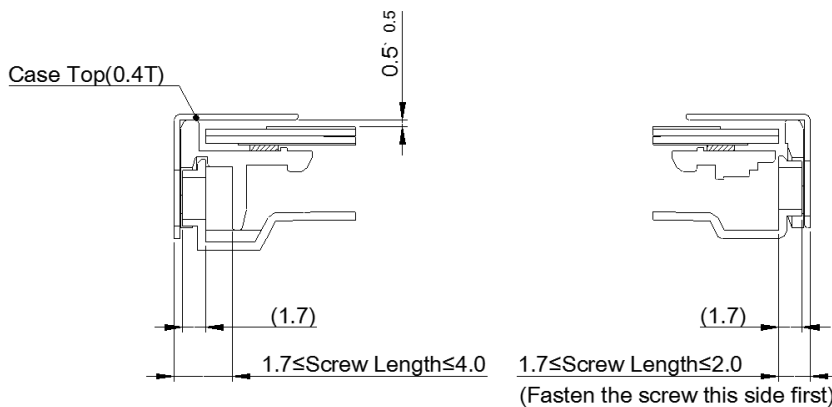
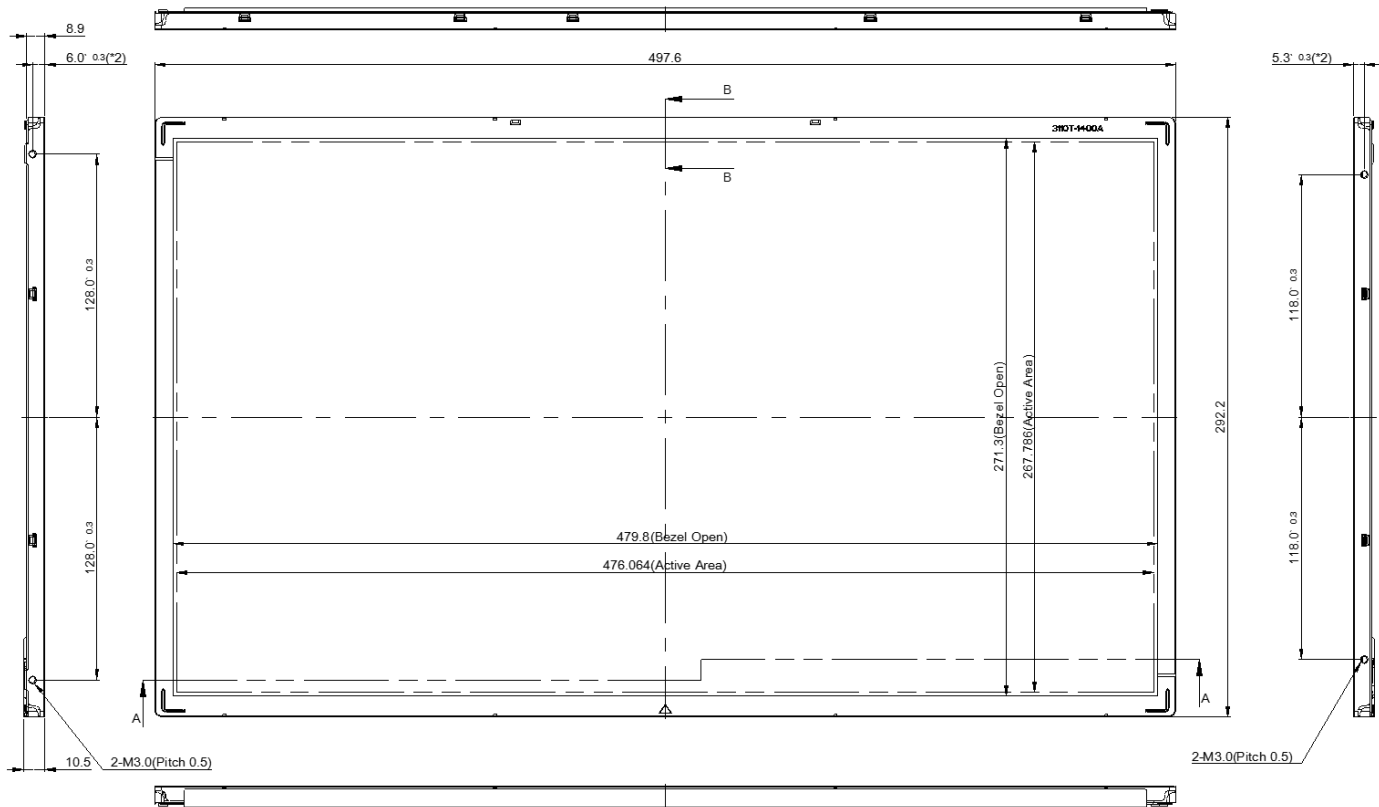
Outline Dimension	Horizontal	497.6mm
	Vertical	292.2mm
	Depth	10.5 mm
Bezel Area	Horizontal	479.8mm
	Vertical	271.3mm
Active Display Area	Horizontal	476.064 mm
	Vertical	267.786 mm
Weight	1685 g(Typ.), 1770 g(Max.)	
Surface Treatment	Anti-glare treatment of the front polarizer (Haze 25%, 3H)	

Note: Please refer to a mechanical drawing in terms of tolerance at the next page.

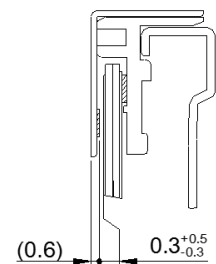
- Outline dimensions (horizontal, vertical and outside depth) are measured by using vernier calipers.
- The inside depth dimensions are measured by using height gauge, when LCM is put face down onto a flat surface.

Product Specification

<FRONT VIEW>



SECTION A-A
SCALE 2/1

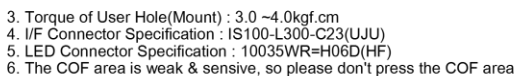


SECTION B-B
SCALE 2/1

<REAR VIEW>



1. Unspecified tolerances are to be ± 0.5
2. Tilt and partial disposition tolerance of display area are as following.
- (1) Y-direction : $|A-B| \leq 1.0$
- (2) X-direction : $|C-D| \leq 1.0$



As The IPS panel is sensitive & slim, please recommend the metal frame of the system supports the panel by the double side-mount.

Product Specification

6. Reliability

Environment test condition

No	Test Item	Condition	Notes
1	High temperature storage test	$T_a = 60^{\circ}\text{C}$, 240h	1
2	Low temperature storage test	$T_a = -20^{\circ}\text{C}$, 240h	1
3	High temperature operation test	$T_a = 50^{\circ}\text{C}$, 50%RH, 240h	1
4	Low temperature operation test	$T_a = 0^{\circ}\text{C}$, 240h	1
5	Humidity condition operation	$T_a = 40^{\circ}\text{C}$, 90%RH	1
6	Vibration test (non-operating)	Waveform : Random Vibration level : 1.0Grms Bandwidth : 10-300Hz Duration : X,Y,Z, 10min One time each direction	
7	Shock test (non-operating)	Shock level : 100G Waveform : Half sine wave, 2ms Direction : $\pm X$, $\pm Y$, $\pm Z$ One time each direction	
8	Altitude Operating Storage / Shipment	0 - 10,000 feet (3,048m) 0 - 40,000 feet (12,192m)	
9	Maximum storage humidity for 4 corner light leakage Mura	Max 70%RH, $T_a = 40^{\circ}\text{C}$	

Note 1) Result Evaluation Criteria:

TFT-LCD panels test should take place after cooling enough at room temperature.

In the standard condition, there should be no particular problems that may affect the display function.

* T_a = Ambient Temperature

Product Specification**7. International Standards****7-1. Safety**

- a) UL 60950-1, Underwriters Laboratories Inc.
Information Technology Equipment - Safety - Part 1 : General Requirements.
- b) CAN/CSA-C22.2 No. 60950-1-07, Canadian Standards Association.
Information Technology Equipment - Safety - Part 1 : General Requirements.
- c) EN 60950-1, European Committee for Electrotechnical Standardization (CENELEC).
Information Technology Equipment - Safety - Part 1 : General Requirements.
- d) IEC 60950-1, The International Electrotechnical Commission (IEC).
Information Technology Equipment - Safety - Part 1 : General Requirements

7-2. Environment

- a) RoHS, Directive 2011/65/EU of the European Parliament and of the council of 8 June 2011

Product Specification

8. Packing

8-1. Designation of Lot Mark

a) Lot Mark

A	B	C	D	E	F	G	H	I	J	K	L	M
---	---	---	---	---	---	---	---	---	---	---	---	---

A,B,C : SIZE(INCH)

E : MONTH

D : YEAR

F ~ M : SERIAL NO.

Note

1. YEAR

Year	2011	2012	2013	2014	2015	2016	2017	2018	2019	2020
Mark	A	B	C	D	E	F	G	H	J	K

2. MONTH

Month	Jan	Feb	Mar	Apr	May	Jun	Jul	Aug	Sep	Oct	Nov	Dec
Mark	1	2	3	4	5	6	7	8	9	A	B	C

b) Location of Lot Mark

Serial No. is printed on the label. The label is attached to the backside of the LCD module.
 This is subject to change without prior notice.

Product Specification

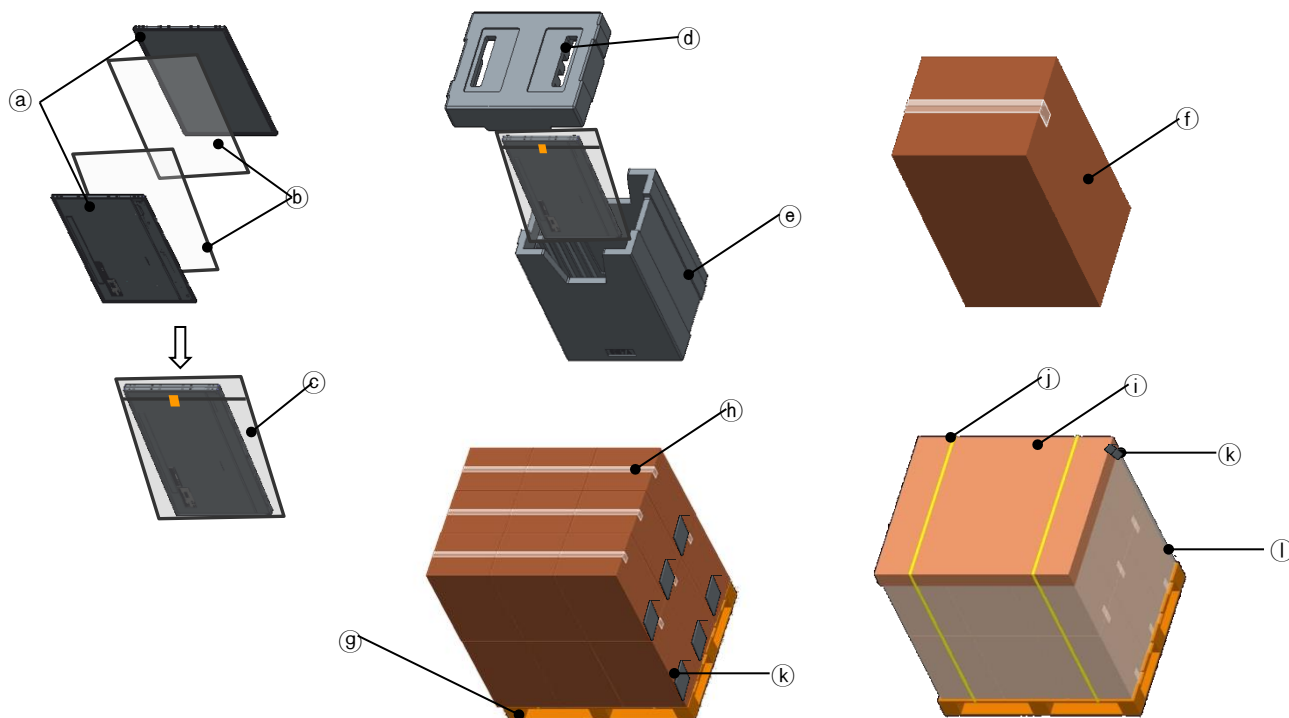
8-2. Packing Form

a) LCM quantity in one box : 12ea(2 Module is packed in 1 Al Bag)

LCM quantity in one Pallet : 216ea

b) Box Size : 365mm X 315mm X 568mm

c) Pallet Ass'y Size: 1140mmX990mmX1,258mm



No.	Description	Material
(a)	LCM	—
(b)	Protect film	OPP
(c)	AL-Bag	AL
(d)	Packing,Top	EPS
(e)	Packing,Bottom	EPS
(f)	Box	Paper(SW)
(g)	Pallet	Plywood
(h)	Tape	OPP
(i)	Angle Cover	Paper(SW)
(j)	BAND	PP
(k)	LABEL	YUPO PAPER
(l)	Wrap	—

Product Specification

9. PRECAUTIONS

Please pay attention to the followings when you use this TFT LCD module.

9-1. MOUNTING PRECAUTIONS

- (1) You must mount a module using holes arranged in four corners or four sides.
- (2) You should consider the mounting structure so that uneven force (ex. Twisted stress) is not applied to the module. And the case on which a module is mounted should have sufficient strength so that external force is not transmitted directly to the module.
- (3) Please attach the surface transparent protective plate to the surface in order to protect the polarizer. Transparent protective plate should have sufficient strength in order to resist external force.
- (4) You should adopt radiation structure to satisfy the temperature specification.
- (5) Acetic acid type and chlorine type materials for the cover case are not desirable because the former generates corrosive gas of attacking the polarizer at high temperature and the latter causes circuit break by electro-chemical reaction.
- (6) Do not touch, push or rub the exposed polarizers with glass, tweezers or anything harder than HB pencil lead. And please do not rub with dust clothes with chemical treatment.
Do not touch the surface of polarizer for bare hand or greasy cloth. (Some cosmetics are detrimental to the polarizer.)
- (7) When the surface becomes dusty, please wipe gently with absorbent cotton or other soft materials like chamois soaked with petroleum benzene. Normal-hexane is recommended for cleaning the adhesives used to attach front / rear polarizers. Do not use acetone, toluene and alcohol because they cause chemical damage to the polarizer.
- (8) Wipe off saliva or water drops as soon as possible. Their long time contact with polarizer causes deformations and color fading.
- (9) Do not open the case because inside circuits do not have sufficient strength.
- (10) As the IPS panel is sensitive & slim, please recommend the metal frame of the system supports the panel by the double side-mount.

9-2. Operating Precautions

- 1) Response time depends on the temperature. (In lower temperature, it becomes longer.)
- 2) Brightness depends on the temperature. (In higher temperature, it becomes lower.) And in lower temperature, response time (required time that brightness is stable after turned on) becomes longer.
- 3) Be careful for condensation at sudden temperature change. Condensation makes damage to polarizer or electrical contacted parts. And after fading condensation, smear or spot will occur.
- 4) When fixed patterns are displayed for a long time, remnant image is likely to occur.
- 5) Module has high frequency circuits. Sufficient suppression to the electromagnetic interference shall be done by system manufacturers. Grounding and shielding methods may be important to minimize the interference.
- 6) Please do not give any mechanical and/or acoustical impact to LCM. Otherwise, LCM can't be operated its full characteristics perfectly.
- 7) A screw which is fastened up the steel should be a machine screw. (If not, it causes metallic foreign material and deal LCM a fatal blow)
- 8) Please do not set LCD on its edge.
- 9) When LCMs are used for public display, defects such as Yogore & image sticking can not be guaranteed.
- 10) LCMs cannot support "Interlaced Scan Method"
- 11) When this reverse model is used as a forward-type model (PCB on top side) or a Portrait-type mode at storage and operation, LGD can not guarantee any defects of LCM.
- 12) Please conduct image sticking test after 2-hour aging with Rolling Pattern at normal temperature. (25~40℃)

Product Specification

9-3. Electrostatic Discharge Control

Since a module is composed of electronic circuits, it is not strong to electrostatic discharge. Make certain that treatment persons are connected to ground through wrist band etc. And don't touch interface pin directly.

9-4. Precautions For Strong Light and Hazardous Materials Exposure

Strong light exposure causes degradation of polarizer and color filter.

The LCM should be avoided direct contact with hazardous materials such as sulfur, acetic acid, chlorine, etc. These materials may cause chemical reaction such as sulfurization, corrosion, discoloration, etc.

9-5. Storage

When storing modules as spares for a long time, the following precautions are necessary.

- 1) Store them in a dark place. Do not expose the module to sunlight or fluorescent light. Keep the temperature between 5℃ and 35℃ at normal humidity.
- 2) The polarizer surface should not come in contact with any other object.
It is recommended that they be stored in the container in which they were shipped.

9-6. Handling Precautions For Protection Film

- 1) The protection film is attached to the bezel with a small masking tape. When the protection film is peeled off, static electricity is generated between the film and polarizer. This should be peeled off slowly and carefully by people who are electrically grounded and with well ion-blown equipment or in such a condition, etc.
- 2) When the module with protection film attached is stored for a long time, sometimes there remains a very small amount of glue still on the bezel after the protection film is peeled off.
- 3) You can remove the glue easily. When the glue remains on the bezel surface or its vestige is recognized, please wipe them off with absorbent cotton waste or other soft material like chamois soaked with normal-hexane.