

SUMO2 Protein

Recombinant human protein expressed in E.coli cells

Catalog # S294-31H

Lot # F471-1

Product Description

Recombinant human SUMO2 (1-93) was expressed in E. coli cells using an N-terminal His tag. The gene accession number is [BC008450](#).

Gene Aliases

HSMT3, SMT3B, SMT3H2, SUMO3, Smt3A

Formulation

Recombinant protein stored in 50mM sodium phosphate, pH 7.0, 300mM NaCl, 150mM imidazole, 0.1mM PMSF, 0.25mM DTT, 25% glycerol.

Storage and Stability

Store product at -70°C. For optimal storage, aliquot target into smaller quantities after centrifugation and store at recommended temperature. For most favorable performance, avoid repeated handling and multiple freeze/thaw cycles.

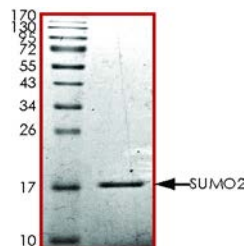
Scientific Background

SUMO2 is a member of the SUMO (small ubiquitin-like modifier) protein family which functions in a manner similar to ubiquitin. SUMO2 is bound to target proteins as part of a post-translational modification system and modifies numerous cellular proteins and affect their metabolism and function. SUMO2 is also involved in a variety of cellular processes, such as nuclear transport, transcriptional regulation, apoptosis, and protein stability (1). SUMO2 is predominantly detected on nuclear bodies (2).

References

1. Su, H.-L. et.al: Molecular features of human ubiquitin-like SUMO genes and their encoded proteins. Gene 296: 65-73, 2002.
2. Kamitani, T. et.al: Characterization of a second member of the sentrin family of ubiquitin-like proteins. J. Biol. Chem. 273: 11349-11353, 1998.

Purity



The purity of SUMO2 was determined to be **>95%** by densitometry. Approx. MW **17.5 kDa**.

SUMO2 Protein

Recombinant human protein expressed in E. coli cells

Catalog #	S294-31H
Lot #	F471-1
Purity	>95%
Concentration	0.5 µg/µl
Stability	1yr at -70°C from date of shipment
Storage & Shipping	Store product at -70°C. For optimal storage, aliquot target into smaller quantities after centrifugation and store at recommended temperature. For most favorable performance, avoid repeated handling and multiple freeze/thaw cycles. Product shipped on dry ice.

To place your order, please contact us by phone 1-(604)-232-4600, fax 1-604-232-4601 or by email: orders@signalchem.com
www.signalchem.com

FOR IN VITRO RESEARCH PURPOSES ONLY. NOT INTENDED FOR USE IN HUMAN OR ANIMALS.