

4.2 Pick-up

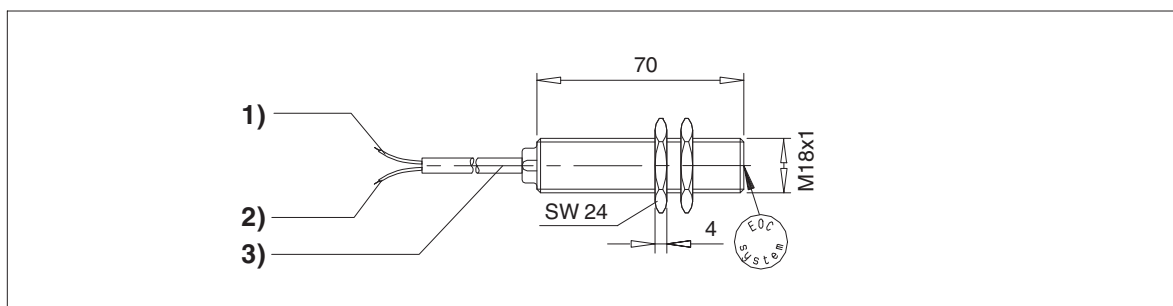



Fig. 4: Dimensioned drawing of the pick-up

- 1) blue (bu)
- 2) brown (bn)
- 3) Lead length 2 m (bu)

The pick-up records the magnetic field of the transmitter each time it is passed and, if there is sufficient field strength, sends a square-wave signal to the evaluating instrument. Below a fixed field-strength threshold (temperature switch point) no signal is sent.

4.2.1 Technical data

Type designation	BIM-G18-Y1/S926
Output signal	according to EN 60947-5-6 (NAMUR)
Type	MS-threaded tube, chrome-plated M18x1x70 mm
Fitting type	flush or not flush
Tightening torque housing nut	25 Nm
Protection class	IP 67
Operating temperature	- 25 °C to + 70 °C
Ex-approval according to conformity certificate	KEMA 03 ATEX 1122 X issue no. 2
Internal capacity (Ci)	0 nF
Inductivity (Li)	0 µH
Identification of the device	 II 1 G Ex ia IIC T6Ga II 2 D Ex ia IIIC T85°C Db (maximum $U_i = 16$ V; $I_i = 20$ mA; $P_i = 200$ mW)

4.2.2 Connection

The pick-up and the evaluation device are connected by a twin-core cable. The max. cable length is 1.0 mm² cross section 500 m. The feed cable is always separate and must not be incorporated into multi-core cables (risk of coupling disturbing voltages in).