

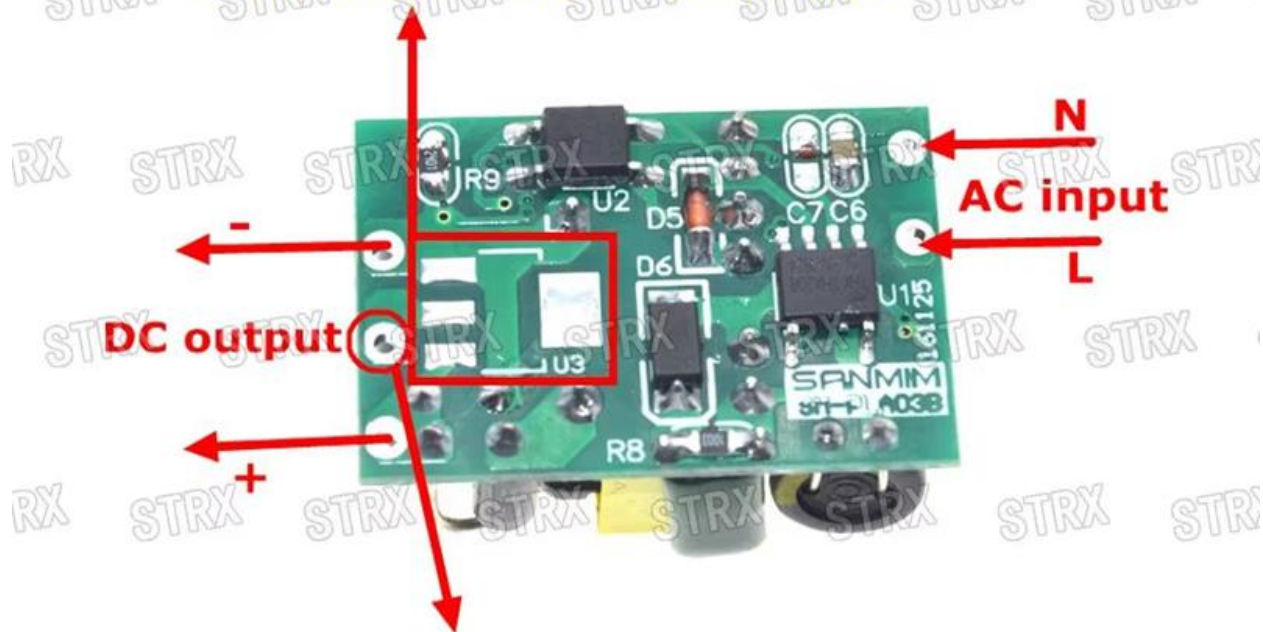
Product Description

5V 700mA

Product characteristics

This power supply is an isolated industrial module power supply, with temperature protection, overcurrent protection and short circuit full protection of high and low voltage isolation, AC85~265V wide voltage input, AC and DC dual use, 431 precise voltage regulator DC5V output, small size, high reliability, high cost performance characteristics.

Welding AMS1117 (3.3V/5V) can achieve dual output, the dual output interface is +V1, and share GND



Welding AMS1117 (3.3V/5V) will have output, +V1 interface

Input voltage	AC85-265V 50/60HZ or DC100V-370V
Output voltage	DC5V (Zh 0.2V)
Output current	700mA
power	3.6 W.
volume	Length Width Height 3*2*1.8(CM)

Installation method:

A, can be installed in the input and output end pins directly welded on the PCB

B, glue fixed

C. Reliability requirements

The environment is 25° C, and the average trouble-free time at 80% load is 16000 hours

Use environment				
item	unit	Limited value	Threshold value	Test condition
Operating temperature	℃	-20	60	
Relative humidity	%RH	40	90	non-cooling

Technical requirements/input characteristics					
item	unit	Limited value	Typical value	Threshold value	Test condition
Input voltage range	V ac	85	110/220	265	Full load condition
Input voltage range	V dc	100	150/300	370	
Input current	A	0.0273(AX110V)0.014(AC220v)			Full load condition
Input surge current	A	20			Full load condition

Output characteristics/output adjustment rate characteristics					
Output voltage	Minimum current	Limiting current	Peak current	Output voltage range	ripple
+5V	0A	700mA	800mA	4.80~5.2V	60mV

Other output characteristics					
item	unit	Limited value	Typical value	Threshold value	Test condition
Output power	W	0	3.5	4	Dc output power
Output efficiency	%		80		Rated load
Switch overshoot	%			10	
Output rise time	mS			100	

Protection function						
item	unit	Yes/no	Limited value	Typical value	Threshold value	Recovery characteristic
Output overvoltage	V		4.8		5.2	Lock, restart after recovery
Output overwork						
Rate protection			There are			Lock, restart after recovery
Short circuit protection			There are			The fault recovers automatically after it is
Temperature protection			There are			Lock, restart after recovery
Overcurrent protection			There are			Lock, restart after recovery

Product Description **12V 400mA**

Product characteristics

1. The product is easy to install and can be used directly on the motherboard
2. general input voltage, AC 85-265V, or DC110-370V
3. high efficiency, high power density, low output ripple noise, high output voltage accuracy
4. High isolation between input and output
5. overcurrent protection, short circuit protection and temperature protection
6. SM-PLA03B series output terminal can add three-terminal voltage regulator model, AMS11173.3V/5V to achieve dual output, three-terminal voltage regulator package SOT-223, dual output outlet +2 and shared GND.

Input voltage	AC85 265V 50/60HZ or DC100v-370v
Output voltage	DC12V($\pm 0.1V$)
Output current	400mA
power	5w

Use environment

item	unit	Limited value	Typical value	Threshold value	Test condition
Operating temperature		-20		60	
Relative humidity	%RH	40		90	non-cooling

Technical requirement

item	unit	Limited value	Typical value	Threshold value	Test condition
Input voltage range	V ac	85	110/200	265	Full load condition
Input voltage range	V dc	100	150/300	370	Full load condition
Input current	A	0.0273(A \times 110V)0.014(AC220V)			Full load condition
Input surge current	A	20			Full load condition

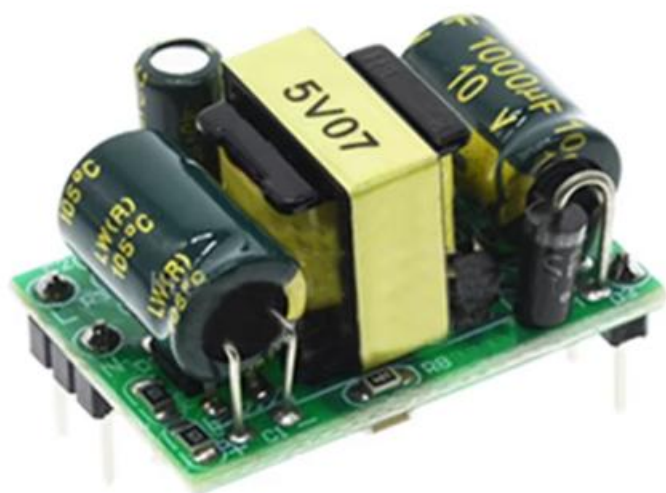
Output characteristic					
Output voltage	Minimum current	Limiting current	Peak current	Output voltage range	ripple
+5V	0A	700mA	800mA	4.80~5.2V	60mV
+12V	0A	500mA	600mA	11.80-12.1V	150mV

Output characteristic					
item	unit	Limited value	Typical value	Threshold value	Test condition
Output power	w		3.5	4	Dc output power
Output efficiency	%		80		Rated load
Switch overshoot	%			10	
Output rise time	mS			100	

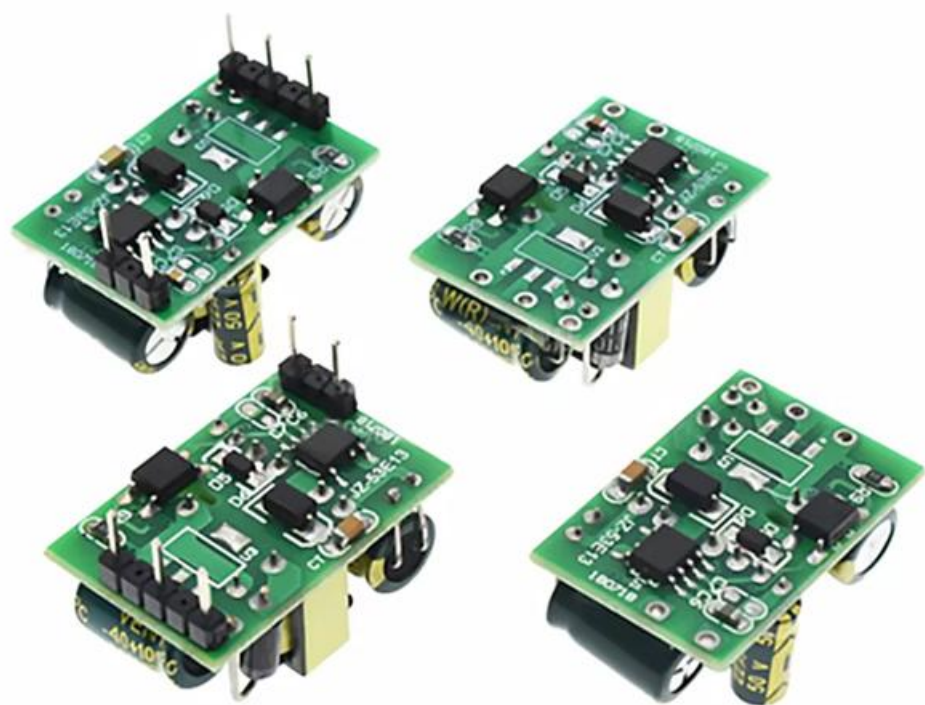
Protection function						
item	unit	Yes/no	Limited value	Typical value	Threshold value	Recovery characteristic
Output overvoltage			4.8		5.2	Lock, restart after recovery
Output overwork						
Rate protection			There are			Lock, restart after recovery
Short circuit protection			There are			The fault recovers automatically after it is rectified
Temperature protection			There are			Lock, restart after recovery
Overcurrent protection			There are			Lock, restart after recovery

Product Illustrations





DIP 5V700MA







DIP 12V 400MA

